

Niamh Coffey, IA4
R00196897
Research Project Design

Project 2: Argument



Genius Loci:
Preserving the Spirit of Place during Adaptive Reuse within Local
Irish Communities

Word Count: 4,855

Introduction to the Argument Project

The aim of this project is to provide a convincing argument in favour of the chosen structure and content of the proposed research project entitled: Genius Loci: Preserving the Spirit of Place during Adaptive Reuse within Local Irish Communities. In doing so, the structure and content of a selection of collected information from the research project will be examined.

To assist the reader in understanding how the research project will be structured, the Table of Contents provides a comprehensive outline of the research direction. This argument assignment will use the table, which is outlined below, as a guide to exploring the structure and contents of the research project, by looking into the various methods of compiling the research project and arguing the reasoning as to why the proposed approach is to be the most preferred.

Table of Contents

Chapter 1 – Introduction

- 1.0** Introduction
- 1.1** Background to and Rationale for Research
- 1.2** Methodology
 - 1.2.1** Aims and Objectives
 - 1.2.2** Source Material
 - 1.2.3** Sample Selection
 - 1.2.4** Data Evaluation
- 1.3** Guide to Research Project
- 1.4** Conclusion

Chapter 2 – Literature Review

- 2.0** Introduction
- 2.1** The Historical Emergence and Philosophy of Genius Loci
- 2.2** Experiencing the Spirit of Place
- 2.3** The Role of Genius Loci Principles during the Adaptive Reuse Process
- 2.4** Conclusion

Chapter 3 – Historical Emergence and Philosophical Foundations of Genius Loci

- 3.0** Introduction
- 3.1** Genius Loci in History: A Documentary of Origins
- 3.2** Genius Loci in Philosophy: The Abstract Perspective
- 3.4** Conclusion

Chapter 4 – Experiencing the of Spirit of Place

- 4.0** Introduction
- 4.1** The Fundamentals of Genius Loci: Tangibility
- 4.2** The Fundamentals of Genius Loci: Intangibility
- 4.3** Conclusion

Chapter 5 – The Role of Genius Loci Principles during the Adaptive Reuse Process

- 5.0** Introduction
- 5.1** Genius Loci in Relation to Adaptive Reuse
- 5.2** Implementing Genius Loci in in the Adaptive Reuse Process
- 5.3** Conclusion

Chapter 6 – Genius Loci: Instilling Spirit of Place in The Old Mill, Killorglin

- 6.0** Introduction
- 6.1** The Historical Background of the Old Mill
- 6.2** The Proposed Design – Killorglin Heritage Centre
- 6.3** A Critical Analysis of the Intervention
- 6.4** Conclusion

Chapter 7 – Conclusions and Recommendations

- 7.0** Introduction
- 7.1** Conclusions of Findings
- 7.2** Recommendations to Industry
- 7.3** Recommendations for Further Research
- 7.4** Conclusion

Bibliography

The Table of Contents is devised based on a logical approach to the information. In first providing the reader with an introduction to the research project, they are immediately prepared to read the project. The project then continues onto the literature review, establishing the existing research surrounding the chosen area of study to date, forming a well-built early composition to the research project.

From there, the project then delves into thematic concentrations, supported by the literature review in commentating on the history, philosophy and experientiality of genius loci as well as the principles of genius loci in relation to adaptive reuse. Taking the learnings from the various sources and research in the previous chapters, the reader now observes how all of the determined information, principles and strategies are applied to the case study building, The Old Mill Killorglin. Finally, the author forms definitive conclusions to the research, providing an end to the research project.

- **Introduction Chapter**

The introduction chapter of the research project is a vital opening that provides the reader with a basic understanding of the chosen research topic, focusing on the background to and rationale for the research, the methodology and an overall guide to the report. In forming an effective introductory account of the research, the reader is persuaded to continue reading, thus, the introduction becomes the first chapter of the research.

Within this introduction chapter, careful consideration will be given to the methodology section. This section forms an integral part of the overall research project, delving into the methodological approach to the thematic concentrations, supplying the reader with an understanding of the techniques utilised during the research. The introduction chapter, is structured as follows:

1.0	Introduction
1.1	Background to and Rationale for Research
1.2	Methodology
1.2.1	Aims and Objectives
1.2.2	Source Material
1.2.3	Sample Selection
1.2.4	Data Evaluation
1.3	Guide to Research Project
1.4	Conclusion

- **1.0 Introduction**

The introduction serves as a prelude to the report that provides an explanation of the research, outlining the context of the chosen topic; Genius Loci, the reasoning behind it being chosen as well as its importance as an area of research. In giving the reader a comprehensive grasp on the research report, it will become more likely the reader will continue to read the report.

- **1.1 Background to and Rationale for Research**

Naturally following the introduction, the background and rationale of the research offers an insight into the existing research of the chosen topic by examining the work of Norberg Schulz, Edward Relph, Yi Fu Tuan, Isis Brook, and other authors, in relation to genius loci's historical and philosophical foundations, its fundamental experientiality and its associated principles. This section also explores the gaps and limitations of the research, proving to the reader that the research report in a necessary exploration.

- **1.2 Methodology**

Once an obvious gap in the chosen research is identified in the background to and rationale for the research section, the next logical step is to define the techniques, or the methodology, involved in evoking and designing the research in detail.

The methodology section is a complex part of the research report as it gathers information and evidence relating to the chosen topic using various strategies. The information is then compiled using the thematic review approach of methodology as it allows an early-stage researcher such as myself to accurately examine and review a host of insightful, written information relevant to topic of Genius Loci and to discern the evident correlations within texts.

To maintain a clear differentiation between the parts that make up the methodology, and to aid in providing a straightforward approach to examining the correlations in the qualitative data, a selection of sub-headings is used in the methodology section of the research project, these include:

- 1.2.1 Aims and Objectives
- 1.2.2 Source Material
- 1.2.3 Sample Selection
- 1.2.4 Data Evaluation

1.2.1 Aims and Objectives

Having presented the reader a background as to why this author has chosen the topic of genius loci and the research project as a whole, the aims and objectives of the research and the developed research statement, question and hypothesis from which they stem from, are expressed in the first sub-section of the methodology section.

The aims of the research project indicate the various understandings and conclusions the author wishes to attain throughout the review of the methodology while the objectives serve as a means of achieving this information through use of the source materials, sample selection and data evaluation.

RESEARCH STATEMENT

In recent years, more emphasis has been placed on protecting our dilapidated buildings, through adaptive reuse. While doing so, increased attention has been evidently focused on preserving the building's sense of place, as well as the Irish culture and heritage.

This research will examine the practices and strategies of Genius Loci being employed in the adaptive reuse intervention of the Old Mill in Killorglin and examine its effectiveness of safeguarding the spirit of place and local histories of the building and town.

RESEARCH QUESTION

How has the spirit of place been accurately identified and effectively preserved during adaptive reuse of the Old Mill on Annadale Road, Killorglin, Co. Kerry?

RESEARCH HYPOTHESIS

The spirit of place of the historical building, the Old Mill in Killorglin, is being accurately identified and respected using genius loci strategies, while undergoing adaptive reuse.

Prove/Disprove

AIMS

1.	Examine the historical emergence and the philosophical connotations of genius loci.
2.	Understand and identify the sense of 'spirit' of a building.
3.	Investigate how genius loci strategies and practices can be employed during adaptive reuse of historic buildings.
4.	Develop a case study of 'The Old Mill', Killorglin in relation to the role of genius loci in adaptive reuse process.
5.	Assemble conclusions derived from the research project and recommendations to industry.

OBJECTIVES

1.	Research various works including: books such as <i>Genius Loci: Towards a Phenomenology of Architecture</i> (Norberg-Schulz, 1980), official documents, research study's, architecture journals and databases to uncover the historical significance of genius loci, and its associated philosophical and psychological viewpoints.
2.	Search for theoretical works that further explore and define the natures of a sense of 'spirit' and a sense of 'place', for instance, E. Relph's <i>'Place and Placelessness'</i> (1976), and examine the differences between these ideas.
3.	Identify genius loci strategies and practices and examine how to evaluate their effectiveness in maintaining the sense of spirit in the adaptive reuse of historical buildings.
4.	Gather primary sources of information including interviews, questionnaires, and surveys.
5.	Provide a series of conclusions and recommendations for further research.

1.2.2 Source Materials

The source materials section will identify and focus on where the information for the research has originated and been constructed. As the sources of information are named and commented on, this in turn responds to the relevant aims and objectives outlined in the previous sub-section.

The source materials are separated into secondary and primary sources. In setting out the sub-section in this way, the reader is first introduced to the early and contemporary interpretations of Genius Loci and then the author’s contributions to the research which are informed by the primary sources.

SOURCE MATERIALS

<i>Secondary Sources</i>	The secondary sources this author will concentrate on include a multitude of published works concerning genius loci in a historical, philosophical, and theoretical sense. A key text pertaining to this area includes Norberg-Schulz’s as <i>Genius Loci: Towards a Phenomenology of Architecture</i> (1980), this text and other seminal and supporting worked will be examined closely in the second chapter of the research project, the Literature Review.
<i>Primary Sources</i>	The primary sources include information received first-hand. This information is based on and builds on the information collected by the author from the secondary sources specifically pertaining to genius loci, adaptive reuse, and this author’s selected case study: The Old Mill, Killorglin. By conducting interviews with relevant professionals in industry, i.e., conservation architects based in the Munster region and with professionals that have significant knowledge of the chosen case study building, i.e., a member of the Killorglin Archive Society. The interview schedule for both participants will significantly differ to suit both fields of expertise and to obtain valuable different points of view.

Interview Schedule 1: Professional in Industry

1.	Can you please state your name and position within your company?
2.	Can you give a description of your understanding of genius loci?
3.	Do you think that the genius loci of a place should be protected? Why?
4.	What would be the advantages or disadvantages of being sensitive to the genius loci of a building during adaptive reuse?
5.	How effective do you think current legislation and guidelines relating to genius loci or the spirit of place are?
6.	How do you think these guidelines and legislation could be improved?
7.	Do you feel the interventions shown in the pixels are effective in following the principles of genius loci?
8.	Do you have any additional information you would like to add?

1.2.3 Sample Selection

For the selection of the case study building, various methods of sampling as outlined in Naoum’s Dissertation Research and Writing for Built Environment Students (2019), were investigated. Among these methods were the criterion and random selection models. Within random selection, the case study building is chosen at random, this may be due to convenience of access to the building and is therefore a biased method of selection. As a result, the information derived from studying the building would be a weak representation of a building with no specific demographic, which would reflect poor and inaccurate conclusions.

The alternative model of sampling, the criterion method, offers a far more accurate and representative sample. This model applies a scientific approach to the selection of the building by first, assembling a list of criteria for which the building must include or abide by, such as the year of construction, the type of building, and the condition of the building, which results in a specific building typology and demographic. This criterion is then entered into a database, such as the National Inventory of Architectural Heritage, which narrows the authors search and shows multiple building that fit the demographic. Ultimately, this scientific process results in a more conclusive and accurate depiction of the building demographic that random sampling and for that reason, the author has decided on this approach.

The role of sampling continues once the building has been chosen. To examine the case study building accurately and thoroughly, a smaller area of the building must be taken as a sample. To choose this space, the author has examined the areas they provide in the proposed intervention and decided that the ground floor interactive museum space in the proposed heritage centre, is most sensitive to genius loci. For that reason, the museum space will be explored in the case study chapter.

The last instance of sampling is used in deciding the candidates for the interview. Considering the topic of the research concentrates on the area of adaptive reuse and genius loci, it is essential that the author interviews a sample of the population specialising in conservation. For this reason, this author has spent time researching various conservation architects within Cork City and proposes to conduct the interview with a professional from JCA Architects, an architecture office specialising in conservation.

To gain a vital understanding of the historical context and character of the chosen case study building, The Old Mill Killorglin, this author proposes a second the development and enactment of a secondary interview with a member of the Killorglin Archive Society. Once the relevant information is received from the interviews, the author can then perform a data evaluation.

1.2.4 Data Evaluation

The data evaluation is a structured amalgamation of the information received from utilising the humanistic tools including interviews, literature reviews and NVivo. This information will then be analysed and by looking at the correlations, similarities and contrasts, and inconsistencies and the author can judge the accuracy of the sources.

By utilizing analytical software such as NVivo, a series of mapping, clustering, transcription, and surveying tools will aid the author in evaluating the qualitative information received from the literature review and interview. Using this software will allow the author to summarise the results of the evaluation, highlighting the key trends and differences to the reader. This analysis is crucial as it determines the direction the study will take.

- **1.3 Research Guide**

Continuing from the methodology section which forms an effective structural framework to the research, the next area of the introduction is the guide to the research report. This section provides the reader with a guide to the chapters of the dissertation to form a constructive layout of the argument. In doing so, the reader is encouraged to continue onto the thematic concentrations which have been laid out purposefully in the order; historical emergence and philosophy, experiencing Spirit of Place and the Principles of Genius Loci. Providing this specified order should give the reader a conclusive understanding of the thematic concentrations.

- **1.4 Conclusion**

Towards the end of the first chapter, the conclusion draws information discussed in the mentioned sections, providing a summary of the points raised. In reminding the reader of the information that has been established due to the core learnings from the methodology section, a clear understanding of the framework as well as the overarching intent of the research is instilled within them, and the reader is prepared to move onto the next section of the research, the literature review.

As previously stated, this first chapter is vital to the research project. It presents a clear and coherent introduction to the project, describing the research's essential context and reasoning. Without this chapter, the reader would be overwhelmed with little to no explanation on the navigation of the research and quickly lose interest in an important topic. Therefore, this introduction chapter is completely necessary within the report.

- **Literature Review**

The Literature Review is an overarching collection of the existing information of the chosen research topic to date. After being introduced to the research project the reader is then taken through an examination and appraisal of texts specific to the topic of genius loci. By discovering the relevant works through systematic reading, the author can discern the similarities and differences relating to the topic in the literature and identify gaps within the research for which the author's research is necessary to fill.

Among the various ways of conducting the literature review, the chronological and thematic approaches were considered, however, since the chronological approach focuses on organising literature by the date of which it was published, this method does not accurately group the research to build a cohesive understanding of the elements that make up genius loci as a concept. Also, due to this author being at an early research stage, using the chronological approach would be an inaccurate method of conducting research as the author could as of yet in this early stage, have unintentionally leave out literature.

For these reasons, the thematic approach to the literature review was also investigated. This method is far better suited to the author's intentions for the research as it provides a connected and coherent view on the research by grouping the key elements of genius loci and immediately creates a strong foundation of research for which the author can build on during their continued research. Due to these reasons, the author has deduced that the best approach to reviewing the literature.

2.0	Introduction
2.1	Historical Emergence and Philosophy of Genius Loci
2.2	Experiencing the Spirit of Place
2.3	The Role of Genius Loci Principles during Adaptive Reuse
2.4	Conclusion

2.0 Introduction

The introduction to the literature review provides the reader with an overview of the subjects of discussion within the chapter. This section is required in order to inform the reader of the current existing knowledge of the research topic by assessing a variety of published texts. In addition, the introduction serves to supply the reader with an expectation of what is to come in the literature review and set out what the chapter will aim to achieve.

2.1 Historical Emergence and Philosophy of Genius Loci

The first section of this chapter will examine the views of the core contributors as well as supporting opinions that have so far been read by the author. This information will be particularly related to the history and the philosophical foundations of genius loci. Seminal texts such as Norberg-Schulz's *'Towards a Phenomenology of Architecture'* (1980) and Edward Relph's *'Place and Placelessness'* (1976) which are of great historical significance to

the field of genius loci, will be simultaneously investigated and commented on by the author. In addition, supporting work including Isis Brook's essay, '*Can Spirit of Place be a guide to Ethical Building?*' (2001), which builds upon these main texts will likewise be explored.

2.2 Experiencing the Spirit of Place

Once a contemporary understanding on genius loci has been instilled in the reader, the review will then refine the area of study to focus on the fundamental theory of 'place'. Literary works which discuss the experiential effects and characteristics of 'place' including Edward Relph's '*Place and Placelessness*' (1976), Coates and Sowers commentary '*Toward a Phenomenology of Place and Place-Making: Interpreting Landscape, Lifeworld and Aesthetics*' (Coates, Seamon, 1984) and Yi Fu Tuan's '*Space and Place: the Perspective of Experience*' (1977), will be investigated in contrast to one another and to supporting work such as Jurate Markeviciene's '*Genius Loci and Homo Faber: A Heritage-Making Dilemma*' (2008). From teaching the reader this experiential view on 'place', they will become aware and sensitive to the objective of instilling this core element of genius loci into the chosen case study building in chapter 6 of the research project.

2.3 The Role of Genius Loci Principles during Adaptive Reuse

As the reader will have now been introduced to development of genius loci and its associated theories, the author will inspect the current guidelines, legislation and advice that has been offered by professional sources like UNESCO and the Venice Charter in employing and safeguarding the principles of genius loci during adaptive reuse. In addition, a range of supporting works that demonstrate this implementation will be critically analysed such as the journal '*The importance of place and authenticity in adaptive reuse of heritage buildings*' by Sara Willkinson and Shabnam Yazdani Mehr (2020) and '*Developing a Model for Relation between Heritage and Place Identity*' by A. Arjomand Kermani, N, Charbgoon and M. Alalhesabi (2016). By illustrating precedent research of how genius loci is a central aspect of the adaptive process, the reader forms a better understanding of how this strategic knowledge can be applied in chapter 6, the case study of The Old Mill, Killorglin.

2.4 Conclusion

The conclusion of the literature review will include a discussion of the learnings made from the assessment of the published literature particularly in reference to gaps or biases identified in research as well as the technical findings and overall accessibility of the texts. From identifying these notable gaps, the reader will comprehend the necessity of the author's research and distinguish the key objectives the author wishes to fulfil in the research project.

- **Thematic Concentrations of Research Project**

To aid in the logical continuation and the optimal conciseness of chapters 3, 4 and 5, a thematic approach is taken, examining The Historical Emergence and Philosophy of Genius Loci, Experiencing the Spirit of Place and The Role of Genius Loci Principles during Adaptive Reuse respectively.

The next chapter, Experiencing the Spirit of Place seeks to illustrate to the reader the theory that has been developed on the idea of ‘place’, a key component of genius loci. Using the literature outlined in the literature review, the human experientiality and engagement of ‘place’ will be explored.

Finally, the chapter, The Role of Genius Loci Principles during Adaptive Reuse, will bring to the readers attention how the genius loci of a place can be protected by employing sensitive strategies and the beneficial effects on humans that this inclusion entails.

3. The Historical Emergence and Philosophy of Genius Loci

The third chapter, the Historical Emergence and Philosophy of Genius Loci, builds a strong basis of the history of genius loci and the resulting philosophies attached to it. The aim of this chapter is to impart knowledge of this history and philosophy onto the reader, a crucial step in getting the reader to appreciate the research project’s investigation.

3.0	Introduction
3.1	Genius Loci in History: A Documentary of Origins
3.2	Genius Loci in Philosophy: The Abstract Perspective
3.3	Conclusion

3.0 Introduction

The introduction of chapter 3 briefly explains to the reader the development of genius loci as a concept. Though the reader might be familiar with the term itself, it is unlikely that the reader has a true understanding of the term’s deeper, historical, and philosophical meanings and attributes. By introducing the reader to the conceptual term, they are provided initial knowledge that can be built on in the next sections of the chapter.

This introduction will also clarify the direction the chapter will take and define the chapter aim of outlining the importance of comprehend genius loci so as to understand the beneficial effects that protecting the genius loci can have and how to accurately and effectively employ genius loci protection strategies.

3.1 Genius Loci in History: A Documentary of Origins

Within this section, the author delves into the etymology of the term and its historical beginnings. Starting with its Roman mythological origins in which sources such as the Stela Ambridge website are examined, the history section which focuses on genius loci's development into a meta concept, referencing both early and modern contributors to the field including 18th century English poet Alexander Pope and Marilena Vecco, in her article '*Genius Loci as a meta-concept*' (2020). This section will also look at how the concept was secularised into an architectural phenomenology and at how genius loci is interpreted and perceived today. By offering this information to the reader, they will not only understand the fundamental history of genius loci, but also have a strong grasp on the context of the research project.

3.2 Genius Loci in Philosophy: The Abstract Perspective

Once the history of genius loci has been established, the author then invites the reader to explore the philosophy of genius loci. Taking insights from authors such as Christian Norberg Schulz in his book, '*Towards a Phenomenology of Architecture*' (1980) and Edward Relph in '*Place and Placelessness*' (1976), the development of the term into a modern philosophy will be examined and discussed. In providing the reader with this knowledge, the author seeks to inform the reader of what they wish to achieve within the case study section, adding to the overall aim of the project.

3.3 Conclusion

The concluding part of the chapter will provide a summary of the key points discussed in the chapter and the author will impart their final thoughts and remarks on genius loci throughout history and its associated philosophy. The conclusion is also vital in leading the reader into the next chapter of the research project.

4. Experiencing the Spirit of Place

The next chapter of the research project, Experiencing the Spirit of Place, is constructed to inform the reader of the theory of 'place', a specific area within the study of genius loci. By examining what 'place' is and how it is experienced in daily life, the reader is taught how to accurately recognise the spirit of place, an essential step towards learning how to respect it. This chapter is laid out as follows:

4.0	Introduction
4.1	The Fundamentals of Genius Loci: Tangibility
4.2	The Fundamentals of Genius Loci: Intangibility
4.3	Conclusion

4.0 Introduction

The introduction provides an overview of the topics to be discussed in the body of the chapter. This integral step orientates the reader, easing them into the 4th chapter of the research project by giving them an accurate expectation of what is to come. This introduction will also describe the theoretical idea of 'place' and 'space' as a sub-genres of genius loci. In doing so, the reader will be aptly prepared to understand and follow the main discussion of the chapter, the phenomenology of 'place' and 'space'.

4.1 The Fundamentals of Genius Loci: Tangibility

As a basis of knowledge has been built in the introduction on 'space', the next section of chapter 4 goes into finer detail, explaining the phenomenology of 'space' and its physical attributes. From looking into the views of Yi-Fu Tuan in his book *'Space and Place'* (2001) and other literary works, 'space', in its physical form as it is perceived through human experience is uncovered and discussed. In learning this information, as well as the information from the next section relating to intangible attributes of genius loci, the reader gains an attentiveness as to how genius loci is sensed which becomes a crucial necessity in the case study chapter.

4.2 The Fundamentals of Genius Loci: Intangibility

Continuing from the discussion into 'space', the next section concentrates on the significance of its conceptual other half, 'place'. This section focuses on the impalpable characteristics of genius loci, revealing how these characteristics are intrinsic in creating meaningful environments they can be consciously perceived by looking at literary work including Robert D. Sack's journal, *'The Power of Place and Space'* (1993) and again, *'Space and Place'* (2001) by Yi-Fu Tuan. Working together with the previous section regarding 'space', this section teaches the reader how these elements of genius loci are recognised and provides a relatable and thought-provoking discussion, subliminally urging the reader to connect to the content by recounting their own personal experience of 'place'.

4.3 Conclusion

Lastly, the conclusion looks back on the key learnings absorbed in the chapter and offers further observations of the author on the topics discussed. The importance of the of the conversation on the elements of genius loci is reaffirmed to the reader and the role this understanding will play in the chapters to come is outlined. The conclusion then guides the reader to the next chapter, ensuring that they are kept on track.

5. The Role of Genius Loci Principles during Adaptive Reuse

The final thematic chapter, namely, chapter 5 will focus on the principles of genius loci during adaptive reuse. This chapter will be broken down to concentrate on the steps involved in implementing genius loci, particularly, offering insight into adaptive reuse, examining genius loci's role in adaptive reuse, and studying the ways in which genius loci strategies can be employed. Therefore, at the end of the three thematic chapters, the reader will be prepared to continue onto the next chapter and appreciate the research completed in order to accurately test the case study building. The steps in the fifth chapter are outlined as follows:

5.0	Introduction
5.1	Genius Loci in Relation to Adaptive Reuse
5.2	Implementing Genius Loci in in the Adaptive Reuse Process
5.3	Conclusion

5.0 Introduction

The introduction of the chapter serves to highlight the contents of the chapter, giving an overview of the points to be discussed. This opening to the chapter is critical in easing the reader into the chapter without giving too much of the in-depth information straight away, thus, evoking interest in the reader to continue the chapter.

5.1 Genius Loci in Relation to Adaptive Reuse

The first section of the chapter prioritises the meaning of adaptive reuse and how this process is carried out. In understanding adaptive reuse as a whole, the reader will further realise the context and aim of the research project, particularly the case study section that involves the adaptive reuse of a disused mill building in Ireland. Research studies like Ramola Lewis's '*An inter-dependency between genius loci, adaptive reuse and architectural conservation*' (2016) will be explored to demonstrate the role genius loci plays during adaptive reuse and special attention will be placed on the adaptive reuse of mill buildings and precedents of this type of adaptation will be examined. In addition, this section will reference the importance of genius loci during this adaptive reuse and discuss how it relates to the adaptation process.

5.2 Implementing Genius Loci in in the Adaptive Reuse Process

The next section of the chapter focuses on strategic methods of implementing genius loci during adaptive reuse. By looking into precedent studies, public guidelines and legislation including the UNESCO Convention for Safeguarding of Intangible Cultural Heritage (2003) and the ICOMOS Venice Charter (1964), the various ways in which the genius loci of a specific place can be protected and respected is explored. By doing this, the reader develops an understanding of how the author intends to employ these methods of protection and gives

the reader the ability to recognise the strategies in place by the author in the case study chapter.

5.3 Conclusion

The conclusion of the 5th chapter once again, outlines the key points of discussion including, the role of genius loci in adaptive reuse and how genius loci can be implemented throughout this process and overall view of the various strategies that can be implemented to safeguard the spirit of place are detailed in this conclusion.

Here, the author also expresses the methods in which they intend to utilise in the next chapter to preserve the genius loci of the chosen case study building, The Old Mill in Killorglin and gives their reasoning for choosing these specific strategies and the benefits to them. The conclusion also navigates the reader onto the next chapter, the case study, having suitably prepared the reader to understand and appreciate the objective of the research report.

- **Case Study: Genius Loci: Instilling Spirit of Place in The Old Mill, Killorglin**

From using the previous chapters to examine of the history and philosophy surrounding genius loci, its associated theories relating to ‘space’ and ‘place’ and the role genius loci plays within adaptive reuse by using literature, interviews and other methods research, a comprehensive understanding of the objective of the research is formed. From sharing this knowledge, the author is now ready in chapter 6 to invite the reader to explore how they have preserved genius loci in their proposal for an intervention into their selected building: The Old Mill, Killorglin, Co. Kerry.

In this chapter, the author draws on all the information they have received throughout the course of the research and uses this information not only demonstrate the genius loci strategies they have applied to the mill building, but also critic their own work, offering insight into the benefits this inclusion will create and also where they believe they could have protected genius loci more effectively within the design.

The chapter will be laid out as follows:

6.0	Introduction
6.1	The Historical Background of the Old Mill
6.2	The Proposed Design – Killorglin Heritage Centre
6.3	A Critical Analysis of the Intervention
6.4	Conclusion

6.0 Introduction

The first section of chapter 6 provides the reader with an introduction to the chosen case study building, The Old Mill, in Killorglin, Co. Kerry. This section offers information including a brief description of the town of Killorglin, the site location of the building within the town, the history of the Old Mill, the author’s proposed function for the building, a communal heritage centre, and an insight into a sampled area of this function within the mill, the interactive museum space.

The introduction also indicates to the reader the subjects to be discussed in chapter 6 including the history of the selected case study building, the proposed function, the critical analysis of the building intervention and the conclusions drawn from this study.

6.1 The Historical Background of the Old Mill

The next section of the case study chapter focuses on the history of The Old Mill. Using information sourced from the Killorglin, Archive Society and Kieran Foley’s *‘History of Killorglin’* (1988), the rich historical context of this mill will be defined, and the reader will be brought on a journey through the various changes of functions and uses the building has accommodated through the years of its life and how this has affected the town of Killorglin.

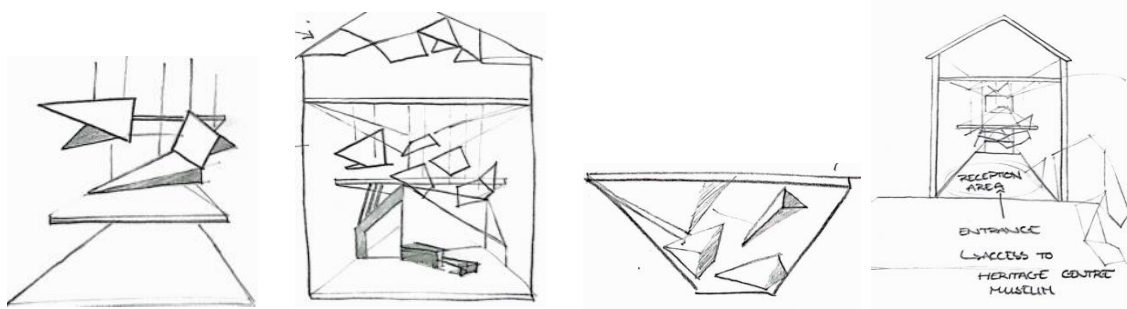


*Panel 6:1, The Old Mill, Annadale Road, Killorglin
Source: Sherry Fitzgearld, 2020*

This section also aims to analyse the existing spirit of place that has developed in The Old Mill as a result of this abundant history, linking back to chapter 3, as to how this spirit can be experienced. By first providing the reader with this prior knowledge of the mill, it will show to them the importance of maintaining the existing character and spirit of place of the building.

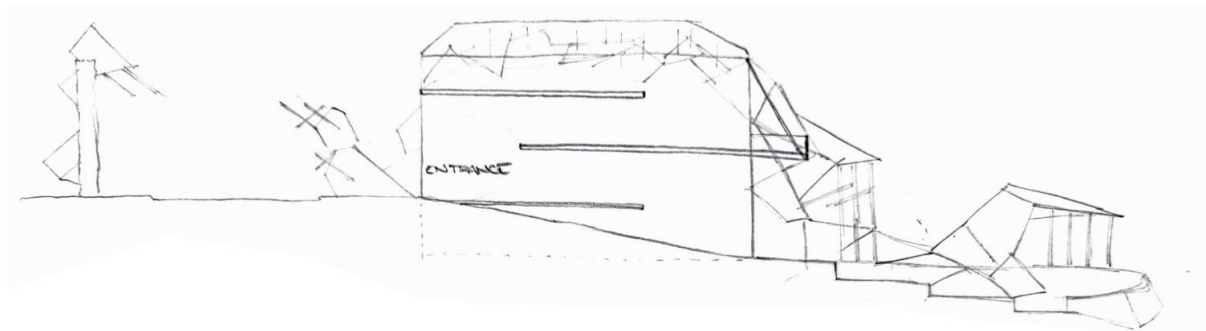
6.2 The Proposed Design – Killorglin Heritage Centre

Once a prior knowledge of the building has been established, the following section will concentrate on the specific area the author is sampling of the building, the interactive museum, as indicated in the sampling methods section of the methodology chapter. Considering this proposed intervention, the author will share with the reader the importance of this space in terms of its sensitivity to the mill's innate genius loci.



Panel 6:2, Conceptual Development

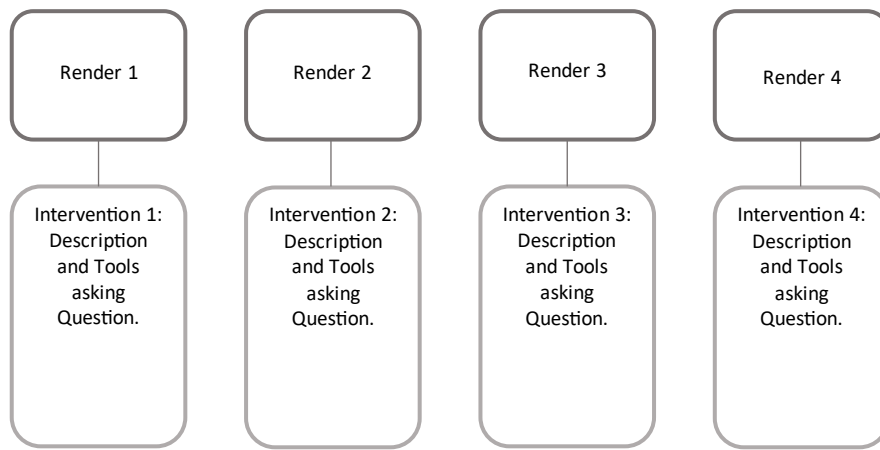
In this section, the author will also describe the design process of this specific area and how this sensitive area has been designed specifically to maintain the spirit of place of the building.



Panel 6:3, Conceptual Section

6.3 A Critical Analysis of the Intervention

Having looked at the proposed intervention design, the critical analysis will then examine the effectiveness of the genius loci strategies followed and show the reader how this sense of place has been protected. Within this section, the author offers a series of illustrations of the chosen intervention, which while not as of yet completed, are likely to address the author's conceptual and design development process of the interactive museum space, and descriptions to the reader of how the design for this space has been developed while following genius loci principles and how they contribute to protecting the spirit of place. These illustrations are essential in communicating the design intent to the reader and providing an accurate depiction of the successfulness of the genius loci implementation.



Panel 6:3, Layout of Critical Evaluation

By comparing this intervention to international best practice precedents, the overall success rate of the preservation of genius loci will be assessed. This section is a critical aspect of the chapter, demonstrating to the reader how the author has utilized their knowledge of genius loci to conserve the spirit of place at The Old Mill Killorglin.

6.3 Conclusion

The conclusion section of chapter 6 will show the reader the key learnings derived from the case study. This section will also give the author the chance to reflect on the critical analysis and the proposed intervention and assess the effectiveness of the chosen design in relation to genius loci preservation. The conclusion will also discuss the benefits that preserving genius loci provides, particularly to the community of Killorglin.

- **Conclusions and Recommendations**

The final chapter of the research project is a reflective report that shares with the reader the authors findings, conclusions, and recommendations as a result of the research project. The author will articulate their conclusive remarks on the completed research and notify the reader of their recommendations to industry for further research in the area of genius loci. This chapter is vital in demonstrating how the completed research has answered the research question and fulfilled the gap in its field of research, and therefore, forming a conclusive end to the research project.

The last chapter is structured as follows:

7.0	Introduction
7.1	Conclusions of Findings
7.2	Recommendations to Industry
7.3	Recommendations for Further Research
7.4	Conclusion

7.0 Introduction

The introduction to chapter 7 provides an opening to the conclusions and recommendations of the research project. It presents the reader the conclusions and recommendations of the research project, including the conclusions of the findings, the author’s recommendations to industry and their recommendations for further research. By expressing this direction to the reader, they are eased into the final chapter of the research project.

7.1 Conclusions of Findings

The next section of chapter 7, draws attention to the authors concluding remarks on the area of genius loci and the spirit of place, and how it can be perceived and preserved. This section indicates the findings of the research using the literature review and the effectiveness of the contributions of the interviews with professionals in the conservation industry. Furthermore, this section also forms concluding findings of the research of the thematic chapters, overall tying the research project together and demonstrating how each area of the research project has ultimately contributed to answering the research question and hypothesis and solving the aims and objectives set out at the beginning of the author’s journey.

7.2 Recommendations to Industry

The recommendations to the industry section will be separated into distinctive sub-sections, offering recommendations to design professionals in the industry, educators, government officials, etc. In doing so, this section will draw attention to the changes the author views as

essential in order to promote the awareness and preservation of genius loci and the spirit of place.

7.3 Recommendations for Further Research

The next section will provide recommendations to future students or professionals for further research into the area of genius loci. From conducting this research project, the author will have realised within their research, gaps that have yet to be fulfilled. The author will therefore offer advice to future researchers on how this research could be further developed.

7.4 Conclusion

The final closing observations of the author will address the contents of chapter 7 including the conclusions derived from the research, the recommendations to industry and the recommendations for further research. Additionally, the author will advocate for the importance of recognising genius loci as a crucial aspect of any place, that must be preserved and respected for future generations.

Ultimately, this conclusion imparts a close to the research project, tying in every area of the research carried out in the project and commenting on the effectiveness of this research. This conclusion is of utmost importance in resolving the research project for both the author and the reader.

Conclusion to the Argument Project

Having completed this argument project, a realistic approach to the research project is set out. However, significant energy should be put into identifying the areas that the author should build on between the end of semester 1 and beginning of semester 2. Taking the time to investigate and incorporate these elements will in turn aid the author in the composition of the research project.

The areas in which the author intends to investigate further include:

- Further Reading, particularly in relation to the area of adaptive reuse and restoration.
- The completion of the design of the interviews and selection of the interview candidates.
- Drafting chapters 1 to 5 of the research project.

In setting up these areas early on, the author will be prepared for the composition of the research project.

Bibliography

Books

Norberg-Schulz, C. (1980). *Genius Loci: Towards a Phenomenology of Architecture*. Rizzoli, New York.

Relph, E. (1976). *Place and Placelessness*. 1st edn. London, Pion.

Tuan, Y. (1977). *Space and Place: the Perspective of Experience*. Minneapolis: University of Minnesota Press.

Foley, K. (1988). *History of Killorglin*. Killorglin History & Folklore Society, Co. Kerry.

Naoum, S. G. (2016). *Dissertation Research and Writing for Built Environment Students*. 4th edn. Routledge, Oxon.

Book Articles

Brook, I. (2000). Can Spirit of Place be a Guide to Ethical Building? *Ethics and Built Environment*, [online]. Available at:

https://www.academia.edu/209447/Can_Spirit_of_Place_be_a_Guide_to_Ethical_Building

[Accessed 18 Oct. 2023]

Research Studies

Markeviciene, J. (2008). Genius Loci and Homo Faber: A Heritage-Making Dilemma. [online] openarchive.icomos.org. Available at: <https://openarchive.icomos.org/id/eprint/85/1/77-LVfF-142.pdf> [Accessed 18 Oct. 2023]

Yazdani Mehr, S. and Wilkinson, S. (2020), The importance of place and authenticity in adaptive reuse of heritage buildings, *International Journal of Building Pathology and Adaptation*. [online]. Available at:

https://www.researchgate.net/publication/341690629_The_importance_of_place_and_authenticity_in_adaptive_reuse_of_heritage_buildings/citation/download [Accessed 18 Oct. 2023]

Lewis, R. (2016), An inter-dependency between genius loci, adaptive reuse and architectural conservation, *University of Lincoln, United Kingdom*. [online]. Available at:

https://www.academia.edu/22729243/An_inter_dependency_between_genius_loci_adaptive_reuse_and_architectural_conservation [Accessed 18 Oct. 2023]

Journal Articles

Coates, G. and Seamon, D. (1984). Toward a Phenomenology of Place and Place-Making: Interpreting Landscape, Lifeworld and Aesthetics. *Oz*. 6. 10.4148/0888-7802.1074. Available at: https://www.researchgate.net/publication/276129455_Toward_a_Phenomenology_of_Place_and_Place-Making_Interpreting_Landscape_Lifeworld_and_Aesthetics [Accessed 18 Oct. 2023]

Kermani, A.A., Charbgoon, N. and Alalhesabi, M. (2016). Developing a Model for the Relation between Heritage and Place Identity. *International Journal of Architectural and Environmental Engineering*, [online] Vol:10, No:3, pp. 406-411. Available at: https://www.academia.edu/34917260/Developing_a_Model_for_the_Relation_between_Heritage_and_Place_Identity [Accessed 18 Oct. 2023]

Vecco, M (2020). Genius loci as a meta-concept. *Journal of Cultural Heritage*, [online] <https://www.sciencedirect.com/science/article/pii/S1296207419301748> [Accessed 6 Dec. 2023]

Sack, R. D. (1993). The Power of Space and Place. *Geographical Review*, [online] <https://www.jstor.org/stable/215735> [Accessed 6 Dec. 2023]

Official Publications

UNESCO (2003). UNESCO – Text of the Convention for Safeguarding of Intangible Cultural Heritage [online] Unesco.org. Available at: <https://ich.unesco.org/en/convention> [Accessed 18 Oct. 2023]

ICOMOS (1964). The Venice Charter – International Council on Monuments and Sites. [online]. Available at: <https://www.icomos.org/en/participer/179-articles-en-francais/ressources/charters-and-standards/157-thevenice-charter> [Accessed 18 Oct. 2023]

Dublin Civic Trust (2023). Dublin Civic Trust - Conservation Principles. [online]. Available at: [https://www.dublincivictrust.ie/conservation-principles#:~:text=These%20include%20the%20Venice%20Charter,and%20Archaeological%20Heritage%20\(1997\)](https://www.dublincivictrust.ie/conservation-principles#:~:text=These%20include%20the%20Venice%20Charter,and%20Archaeological%20Heritage%20(1997)) [Accessed 18 Oct. 2023]

Websites

National Inventory of Architectural Heritage, *Annadale Road, FARRANTOREEN, Killorglin, KERRY*. Available at: <https://www.buildingsofireland.ie/buildings-search/building/21400708/annadale-road-farrantoreen-killorglin-kerry> [Accessed 6 December 2023]

Photographs

Fitzgearld, S. 2020, *Photo of 'The Old Mill', Annadale Road, Killorglin, Co Kerry*. Available at: <https://www.sherryfitz.ie/buy/house/kerry/killorglin/the-old-mill-annadale-road> [Accessed 6 December 2023]