

Introduction

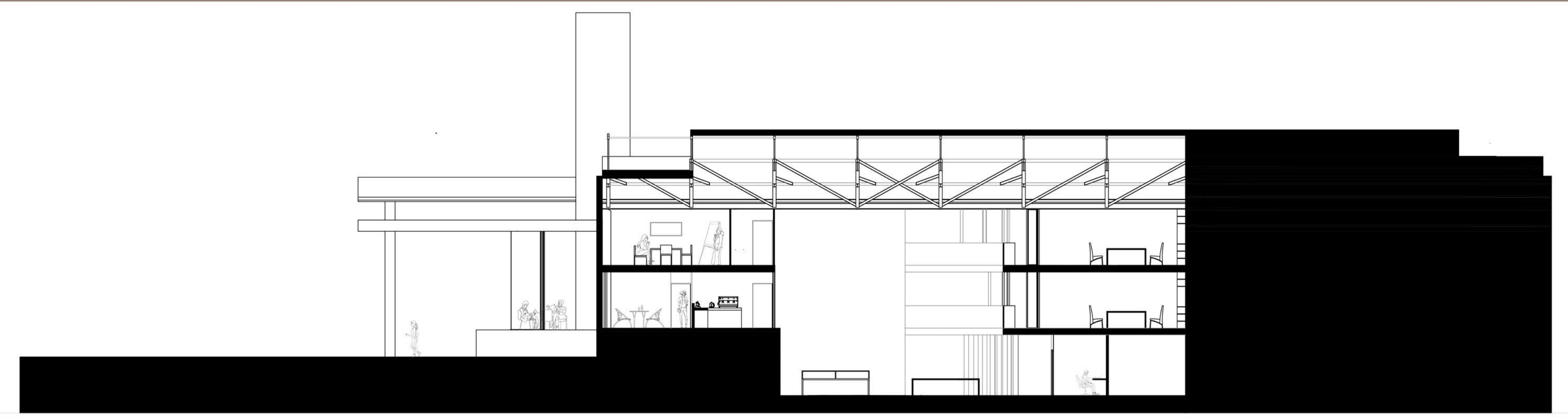
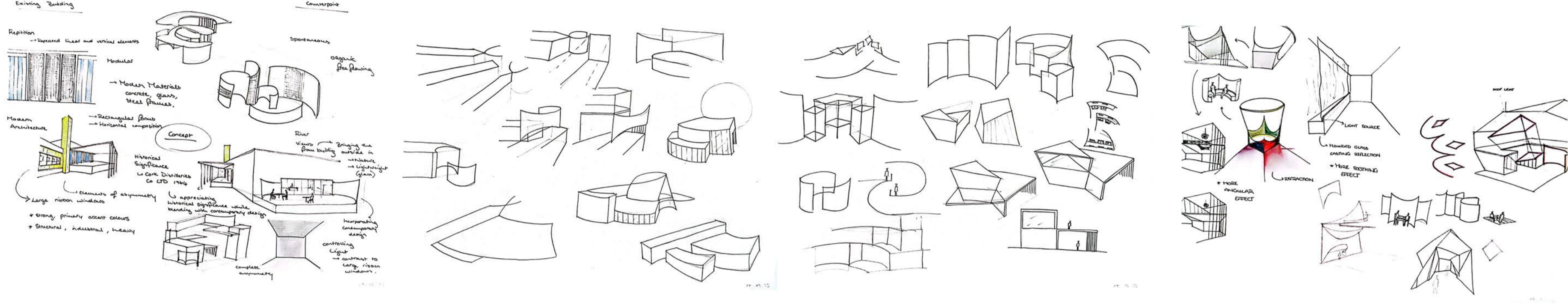
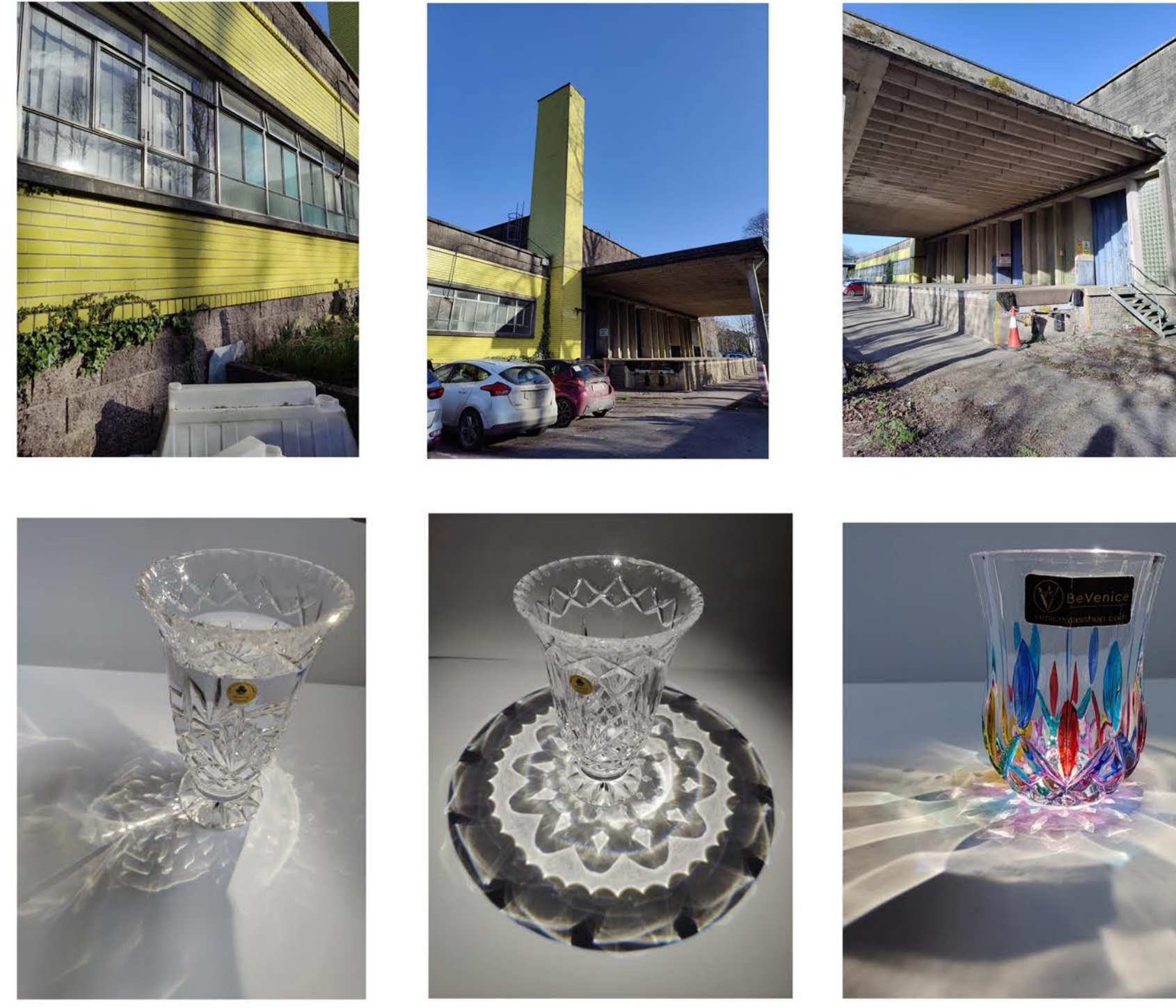
As part of our 3rd year office project, our course group was introduced to the Cork Distiller's Bottling Plant, designed by Irish Architect, Frank Murphy. This building, designed in 1964, follows the influence of mid-century modern architecture with its long, horizontal ribbon windows, raised platforms, pilots and modern materials including concrete, steel, glass, and tile. The unique yellow faced tile on the iconic chimney and building front creates a dramatic façade, epitomizing the character of the build and the bold creativity of the architect. The building itself is south facing, opening up to natural southern light and views of the river and walkway on the perimeter of the site.

Research

My research began with the bottling plant itself. During the site visit, I found I was drawn to the textured glass blocks implemented to pull the natural light deeper into the building. Keeping that materiality in mind, I dove deeper into the history of the plant, discovering that Paddy's Irish Whiskey was primarily bottled there. Driven by this discovery I began to investigate cut glass and crystal whiskey tumblers, particularly the effect of shining light through these cut surfaces and the change in behaviour of the reflections and dispersions when water is added to the glass. My experiment resulted in a combination of uniform geometric reflections of the glasses cut form, and natural, curved dispersions and refractions of light.

Concept

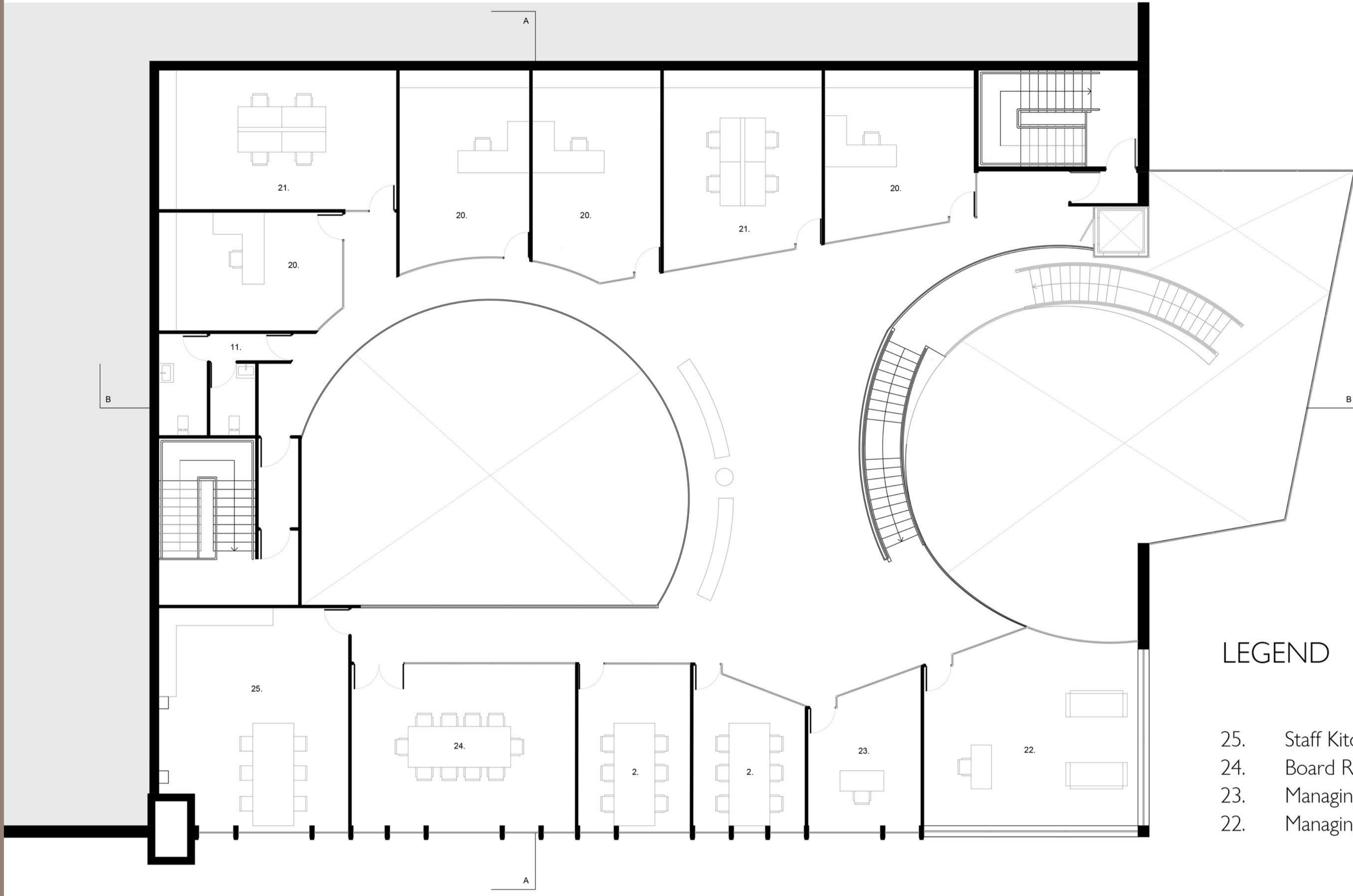
Inspired by these experiments and precedent studies, I continued to develop my concept through sketching these spatial formations and producing a concept model. Eventually my design developed into a series of curved typologies that created opportunities for central working spaces, accompanied by subtly contrasting angular geometries that outline the individual offices. Adding tiered double height areas to the design was influenced by the repeated cut shapes in the crystalware.



Section AA
SCALE 1:100

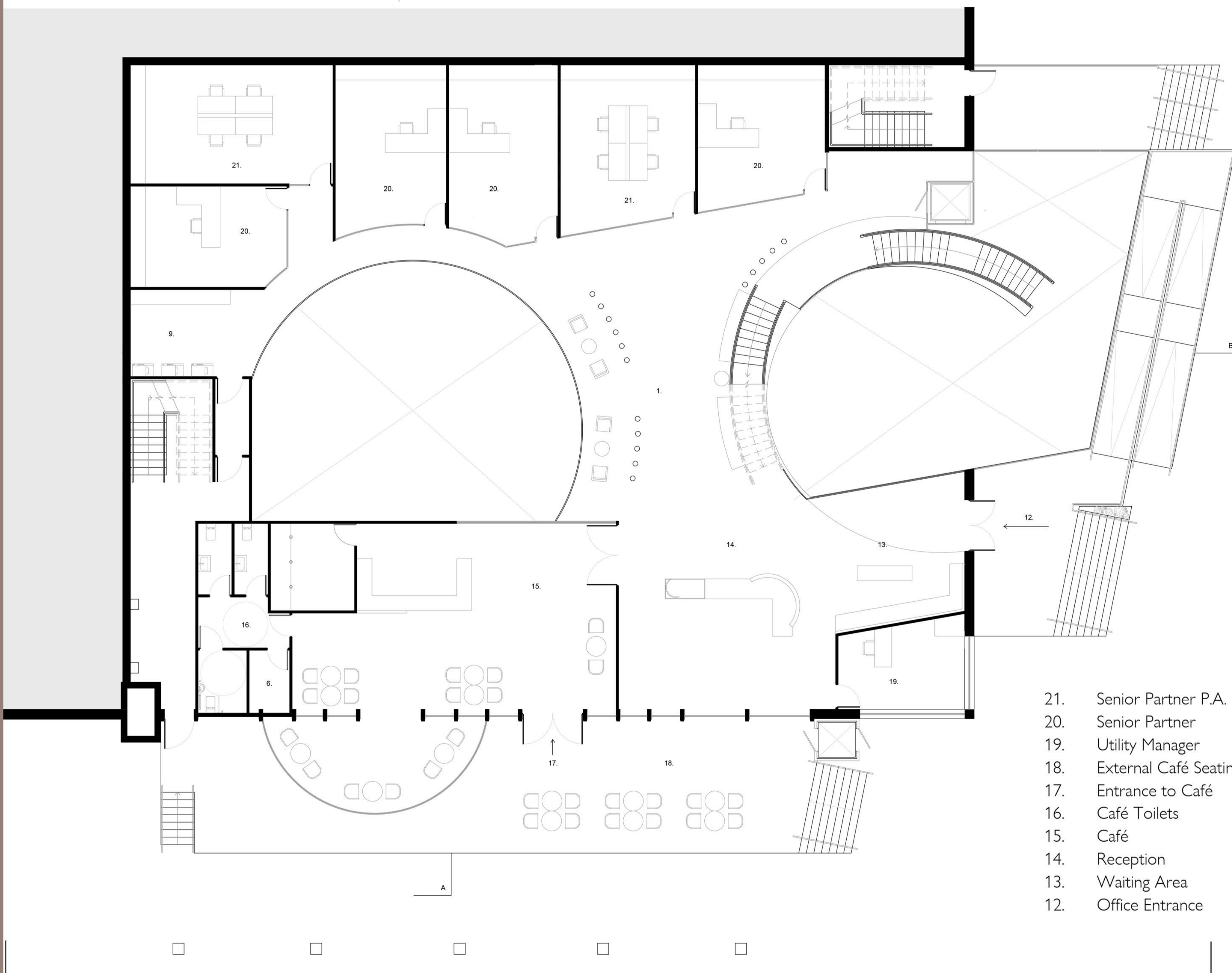


Section BB
SCALE 1:100



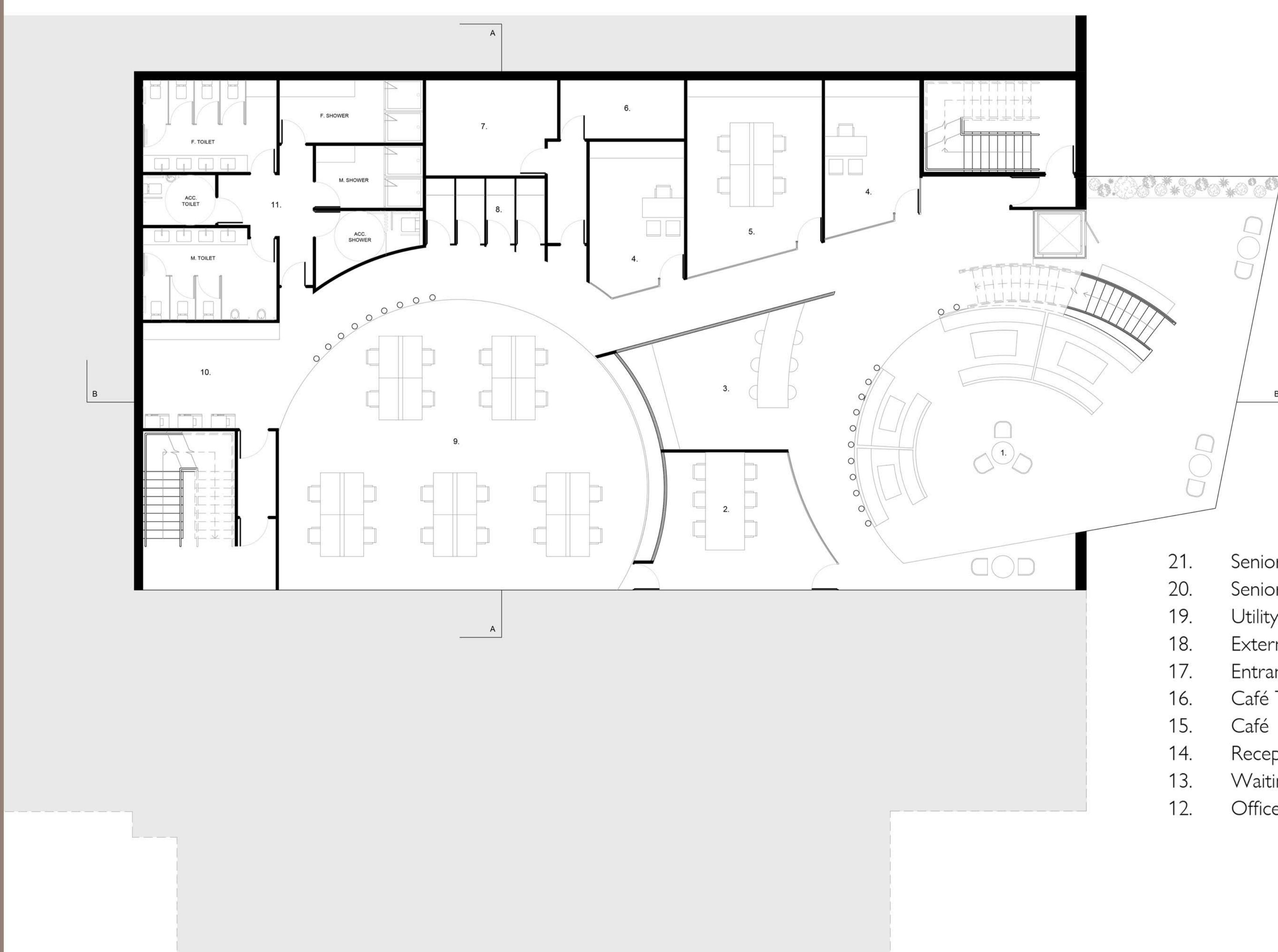
- LEGEND
- 25. Staff Kitchen
 - 24. Board Room
 - 23. Managing Director's P.A.
 - 22. Managing Director

First Floor Plan
SCALE 1:100



- 21. Senior Partner P.A.
- 20. Senior Partner
- 19. Utility Manager
- 18. External Café Seating
- 17. Entrance to Café
- 16. Café Toilets
- 15. Café
- 14. Reception
- 13. Waiting Area
- 12. Office Entrance

Ground Floor Plan
SCALE 1:100

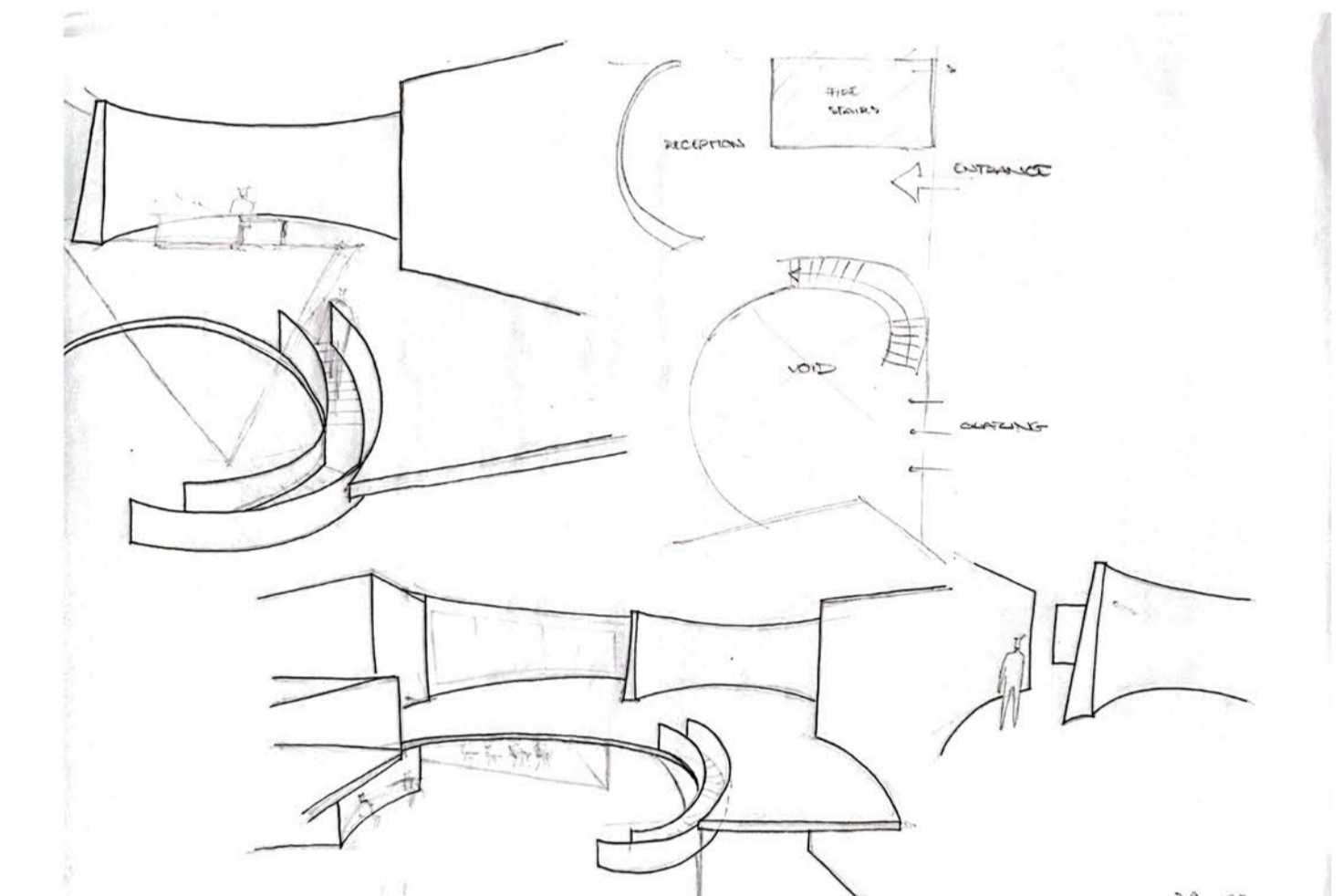
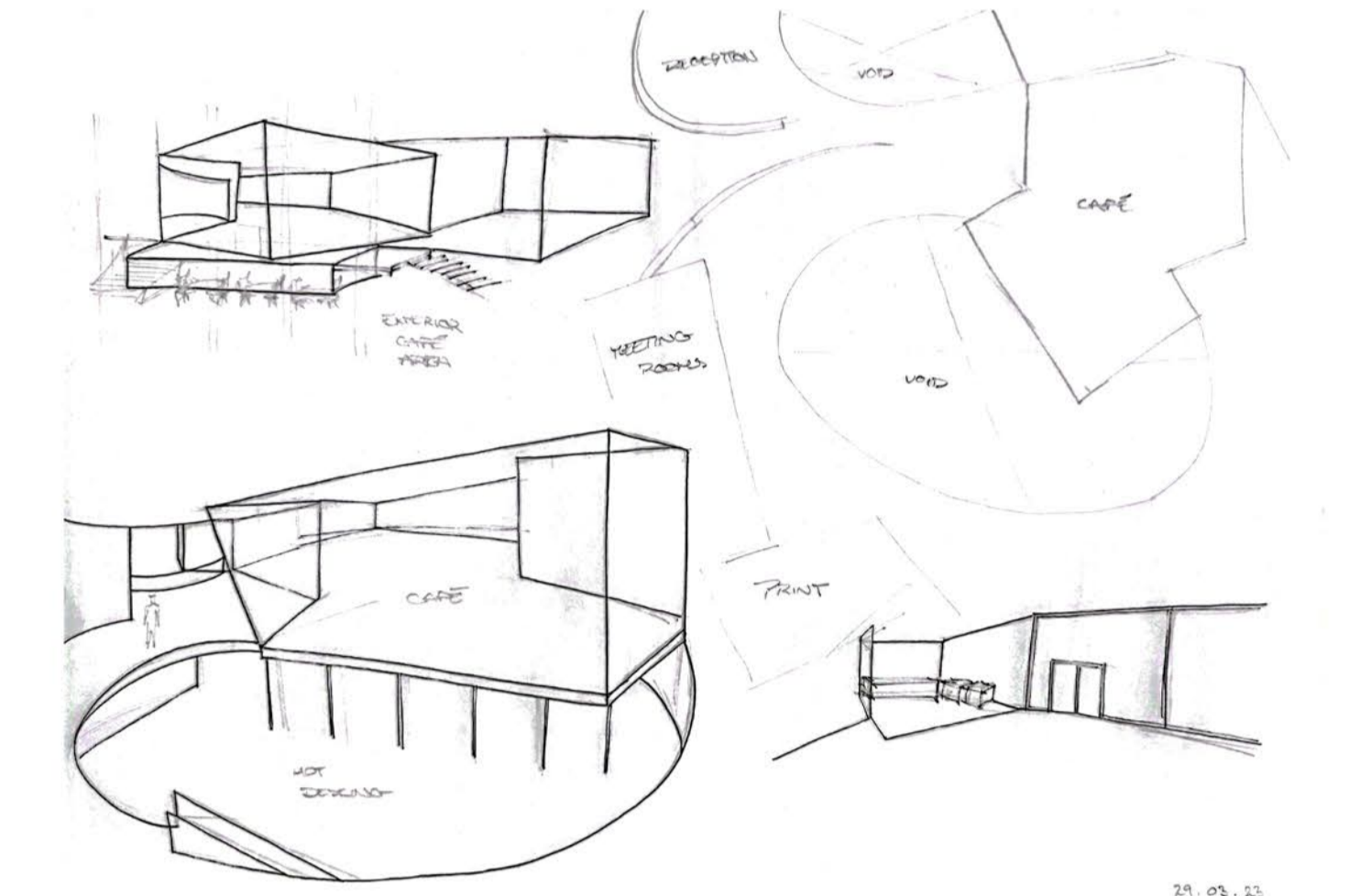


- 21. Senior Partner P.A.
- 20. Senior Partner
- 19. Utility Manager
- 18. External Café Seating
- 17. Entrance to Café
- 16. Café Toilets
- 15. Café
- 14. Reception
- 13. Waiting Area
- 12. Office Entrance

Basement Plan
SCALE 1:100



View of Break Out Spaces

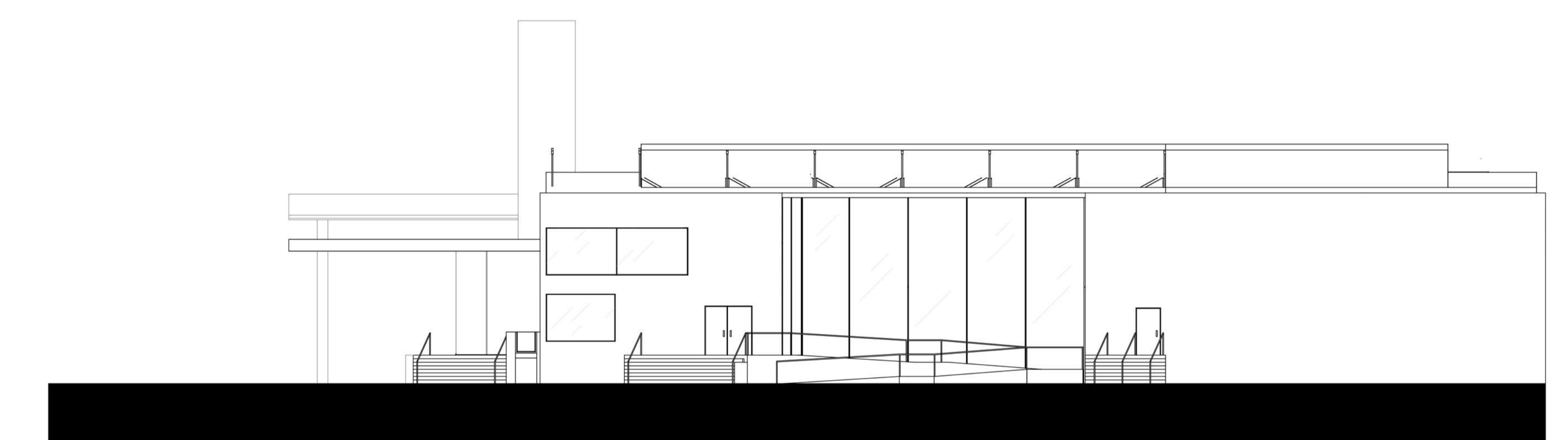


Concept Sketches



View of Breakfast Bar

The route to the break out space from the ground floor takes advantage of the south-easterly natural light by extending into the excavated patio space. This provides a comfortable and bright triple height communal focal point for staff to attend informal meetings, complete some work or simply take a break. Surrounding the break out space is the meeting room, open breakfast bar and audit managers, the curvature of the plan creates a clear circulation route to each of these functions. On the ground floor, the break out space is overlooked by the office waiting area and a contrasting, curved staircase that takes the user to the first floor. Here, the Managing Director enjoys a view east, over the break out space and south, towards the River Lee and Cork City.



Elevation 1
SCALE 1:100



View of Walkway



View of Hot Desking Area